
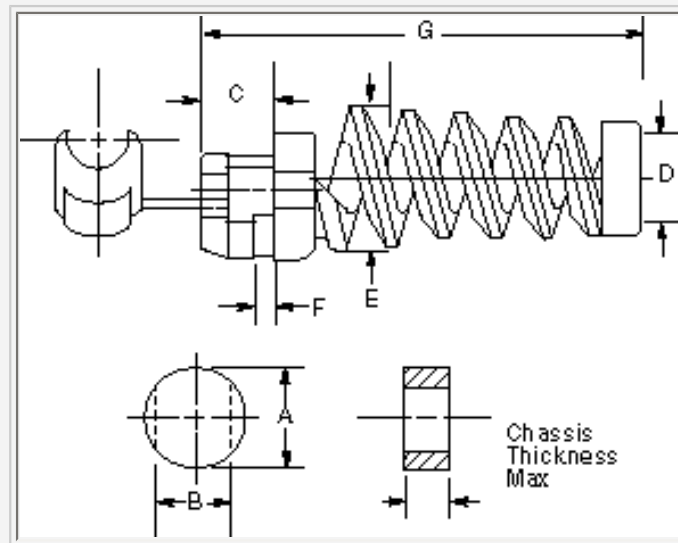


## HS1003BPK25 -- Cord Connectors



Product Specifications	
<b>Product Type</b>	Cord Connectors
<b>Material/Style</b>	Nylon Miniature Snap-In
<b>Cord Diameter Range</b>	.30" - .36" (7.6-9.1)
<b>Cord Connector Body Style</b>	Straight Male
<b>Snap-In Chassis Thickness</b>	.13" (3.2) Max
<b>Color</b>	 <b>Black</b>
<b>Effective Operating Temperature</b>	-40°F to +225°F (-40°C to +107°C)
<b>Flammability</b>	Hubbell Juniors have a UL 94-V2 rating.
<b>Dimension A</b>	.63" (16.0)
<b>Dimension B</b>	.55" (14.0)
<b>Dimension C</b>	.36" (9.1)
<b>Dimension D</b>	.37" (9.4)

<b>Dimension E</b>	.65" (16.5)
<b>Dimension F</b>	.14" (3.6)
<b>Dimension G</b>	2.18" (55.4)
<b>Certifications</b>	UL Recognized, CSA Certified
<b>Packaging</b>	Bulk 25
<b>M Drawings</b>	<a href="#">Click here for M-Drawing</a>
<b>Catalog Page</b>	<a href="#">Click here for catalog page T86</a>
<b>Catalog Section</b>	<a href="#">Click here for Section-T</a>
<b>UPC Number</b>	78358502339
<b>Weight in LBs</b>	0.2



# Miniature Nylon Cord Connectors

## HUBBELL JUNIORS®



Gray Cord Connector



Black Cord Connector



Gray Cord Connector with Spiral



Black Cord Connector with Spiral



Gray Snap-In  
Cord Connector



Black Snap-In  
Cord Connector



### Miniature Nylon Cord Connector

N.P.T. Hub Size	Cord Dia. Range		Gray	Black
	Inches	(mm)		
1/4"	.08"-.14"	(1.9-3.4)	HJ1001GPK25	HJ1001BPK25
	.14"-.20"	(3.4-5.1)	HJ1002GPK25	HJ1002BPK25
	.20"-.27"	(5.1-6.7)	HJ1003GPK25	HJ1003BPK25
3/8"	.15"-.21"	(3.7-5.3)	HJ1004GPK25	HJ1004BPK25
	.21"-.28"	(5.3-7.0)	HJ1005GPK25	HJ1005BPK25
	.28"-.34"	(7.0-8.6)	HJ1006GPK25	HJ1006BPK25
1/2"	.06"-.13"	(1.6-3.2)	HJ1055GPK25	HJ1055BPK25
	.13"-.19"	(3.2-4.7)	HJ1056GPK25	HJ1056BPK25
	.19"-.25"	(4.7-6.3)	HJ1057GPK25	HJ1057BPK25
	.25"-.31"	(6.3-7.9)	HJ1058GPK25	HJ1058BPK25
	.31"-.38"	(7.9-9.5)	HJ1059GPK25	HJ1059BPK25
	.38"-.44"	(9.5-11.1)	HJ1060GPK25	HJ1060BPK25



### Miniature Nylon Cord Connector with Spiral

N.P.T. Hub Size	Cord Dia. Range		Gray	Black
	Inches	(mm)		
1/4"	.08"-.14"	(1.9-3.4)	HJ1010GPK25	HJ1010BPK25
	.14"-.20"	(3.4-5.1)	HJ1011GPK25	HJ1011BPK25
	.20"-.27"	(5.1-6.7)	HJ1012GPK25	HJ1012BPK25
3/8"	.15"-.21"	(3.7-5.3)	HJ1013GPK25	HJ1013BPK25
	.21"-.28"	(5.3-7.0)	HJ1014GPK25	HJ1014BPK25
	.28"-.34"	(7.0-8.6)	HJ1015GPK25	HJ1015BPK25
1/2"	.13"-.19"	(3.2-4.7)	HJ1038GPK25	HJ1038BPK25
	.19"-.25"	(4.7-6.3)	HJ1039GPK25	HJ1039BPK25
	.25"-.31"	(6.3-7.9)	HJ1040GPK25	HJ1040BPK25
	.31"-.38"	(7.9-9.5)	HJ1041GPK25	HJ1041BPK25
	.38"-.44"	(9.5-11.1)	HJ1042GPK25	HJ1042BPK25
	3/4"	.25"-.49"	(6.4-12.3)	HJ1043GPK25
.45"-.71"		(11.4-18.0)	HJ1044GPK25	HJ1044BPK25



### Miniature Nylon Snap-In Cord Connector with Spiral

Cord Diameter Range	For Chassis Thickness	Gray	Black	
				Inches (mm)
.22"-.27"	(5.6-6.9)	.10" (2.5) Max	HS1001GPK25	HS1001BPK25
.28"-.32"	(7.1-8.1)	.10" (2.5) Max	HS1002GPK25	HS1002BPK25
.30"-.36"	(7.6-9.1)	.13" (3.2) Max	HS1003GPK25	HS1003BPK25
.32"-.43"	(8.1-10.9)	.13" (3.2) Max	HS1004GPK25	HS1004BPK25

Notes: Catalog numbers above with "PK25" suffix, i.e. HJ1001GPK25, are bulk packed 25 per carton.

See pages T-97 and T-98 for additional technical data and dimensional drawings.